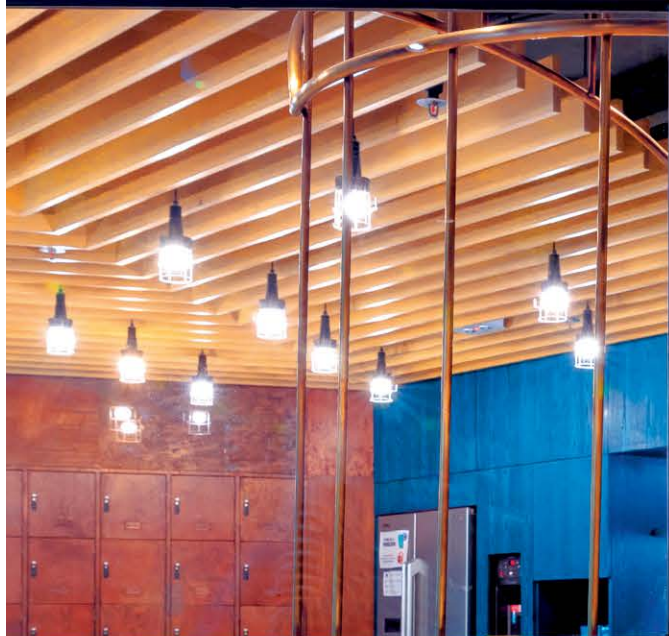


ARCHITECTURE | DESIGN | PEOPLE

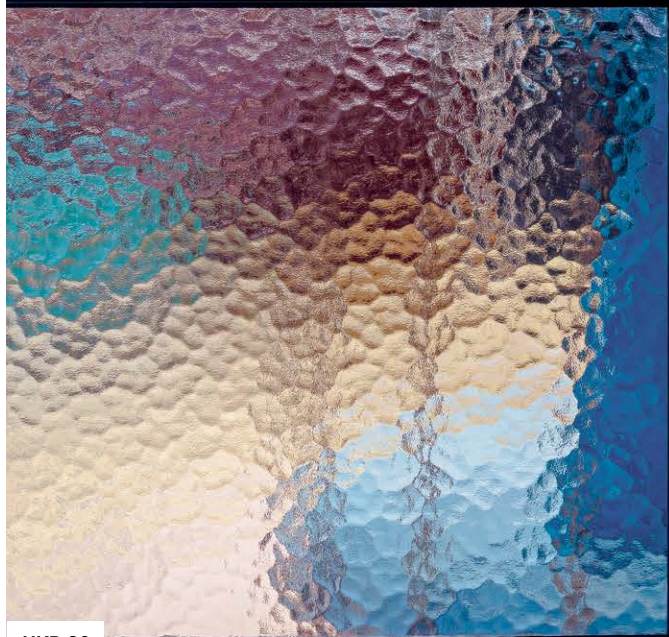
# PERSPECTIVE

NOVEMBER 2018



## WORK IN PROGRESS

CO-WORKING TRENDS  
SHARED FUTURES



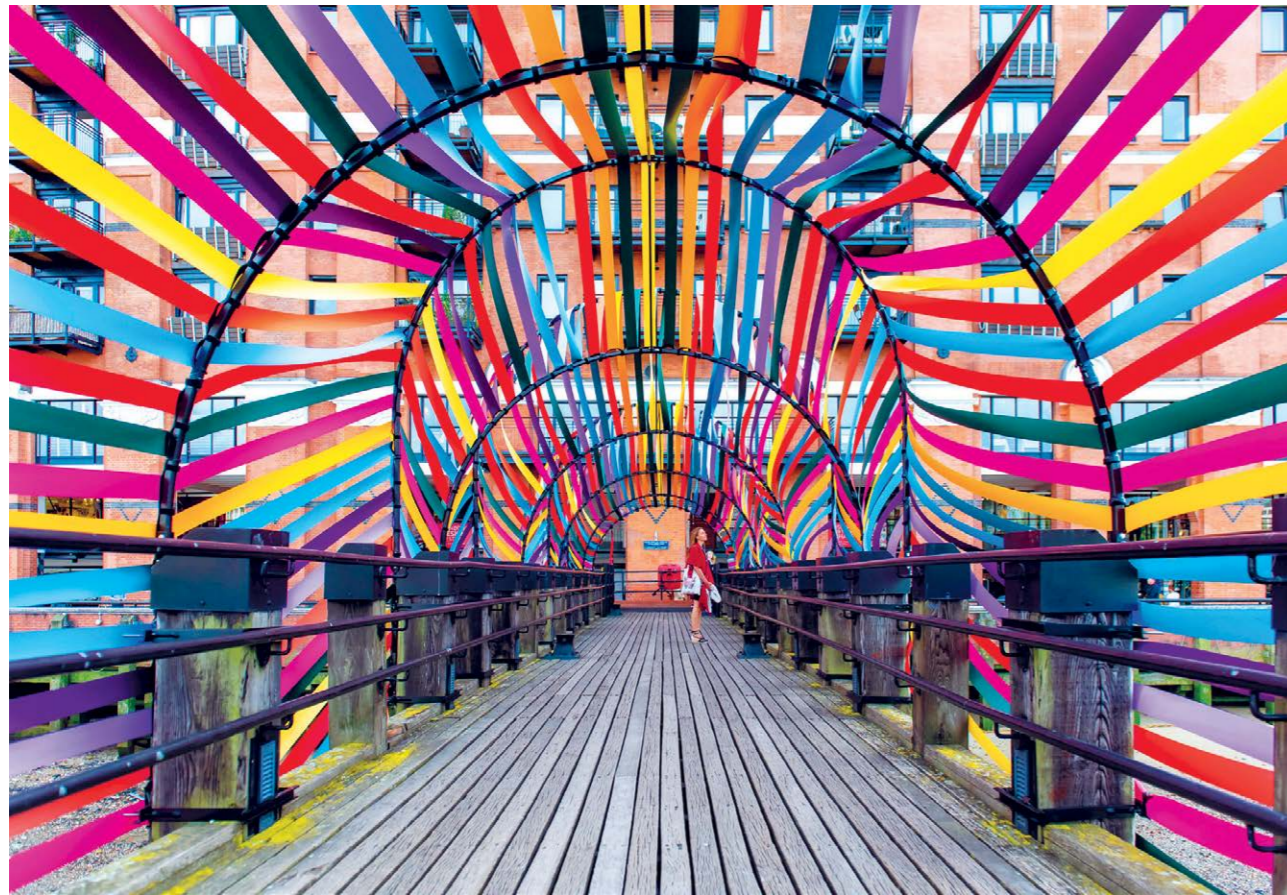
THE SHAPE OF OFFICES  
NEW SPACE PLAYERS

COMMUNAL HOMES  
CO-LIVING IN THE CITY

LONDON DESIGN FESTIVAL  
MAKE IT IN LOS ANGELES!

HKD 60





Gateway to Inclusion, an immersive riverside installation made out of ribbons on the South Bank, is a highlight of *designjunction*

## London calling

The London Design Festival returned to the British capital this autumn bigger and bolder than ever. Renowned British interior architect and designer Alix Lawson guides *Perspective* through the event

Every year, for nine days, thousands of designers, artists and companies from around the world present their latest work at the London Design Festival. This year's festival ran from September 15 to 23 across 11 design districts. The programme included major exhibitions, such as *100% Design*, *Decorex*, *Focus*, *designjunction* and *London Design Fair*, as well as numerous installations and events across the city.

London has a strong claim to be the world's design capital, so it was no surprise that nearly 1 million visitors flocked to the city for last year's festival. And as a resident

creative of the city, I believe this year's festival has been the most impressive to date.

An appreciation of craftsmanship and new uses of materials were common themes at this year's event. This was exemplified by the application of terrazzo to furniture and objects, and the use of stone and marble to make products and accessories. Boundaries were also blurred between art and design, with many products or pieces of furniture that could also be appreciated as works of art. The colour green was used in numerous applications for products, furniture and other objects.

Photo: Ruth Ward

## DESIGNERS TO WATCH

### MALGORZATA BANY: PILOTIS SIDE TABLE

Malgorzata Bany is a London-based artist and designer who specialises in working with Jesmonite. A graduate of the Slade School of Fine Art, where she trained in sculpture, her work crosses a wide range of disciplines including furniture, sculpture and homeware. This small

decorative side table, seen at the *The New Craftsmen* exhibition, is constructed from Jesmonite and inspired by architectural pilotis structures, piers or stilts used to support a building above water or ground.

[malgorzatabany.com](http://malgorzatabany.com)  
[thenewcraftsmen.com](http://thenewcraftsmen.com)



### JOYCE WANG: HOURLASS, SPHERE, NESTING TABLE

The widely acclaimed Joyce Wang Studio pushes boundaries with its new Flint collection. The aim of the range was to elevate terrazzo from a simple surface material to a collection of furniture, lighting and objects that accentuate the material's multi-faceted character. The collection displays curves and bevelled edges, giving terrazzo a contemporary and timeless feeling. The Flint collection will be available in three colour variations: black marble chips set in grey cement; black and white marble chips in green cement; and white marble chips in pink cement.

[joycewang.com](http://joycewang.com)

# PRODUCTS



## TERENCE WOODGATE: THE SOLID TABLE LIGHT

The Solid table light features a cylindrical base of pure Carrara or Nero Marquina marble, with an integrated state-of-the-art dimmable LED illuminating a hand-blown opal glass shade. It is available in two sizes.

*terencewoodgate.com*



## BETHAN GRAY: NIZWA 2X2 CABINET

The Nizwa range of furniture from Bethan Gray's Shamsian collection is inspired by the rounded crenellations of the Nizwa Fort in Oman and the effect of sunlight on colour.

*bethangray.com*

## CONTAIN MALLORCA: CONNECTOR TABLES

The Connector furniture collection is based on single assembly pieces that configure in a near-infinite variety of shelves, tables, desks and other forms. One piece – infinite configurations. They come as flat packed and are easily assembled.

*contain.es*



## LEE BROOM: ORION, LENS FLAIR

The London Design Festival saw the third and final instalment of Lee Broom's stellar-inspired Observatory collection. Orion (below) is the latest astral addition to the range.

*leebroom.com*



## OLIVIA WALKER: COLLAPSED PIECES

Olivia Walker's Collapsed pieces are made from porcelain turned on the wheel, before being built up with thousands of individually-applied fragments of the material. She starts from a set point on the bowl and then lets the accretions spread out to create these stunning pieces of art.

*oliviawalker.co.uk, thenewcraftsmen.com*

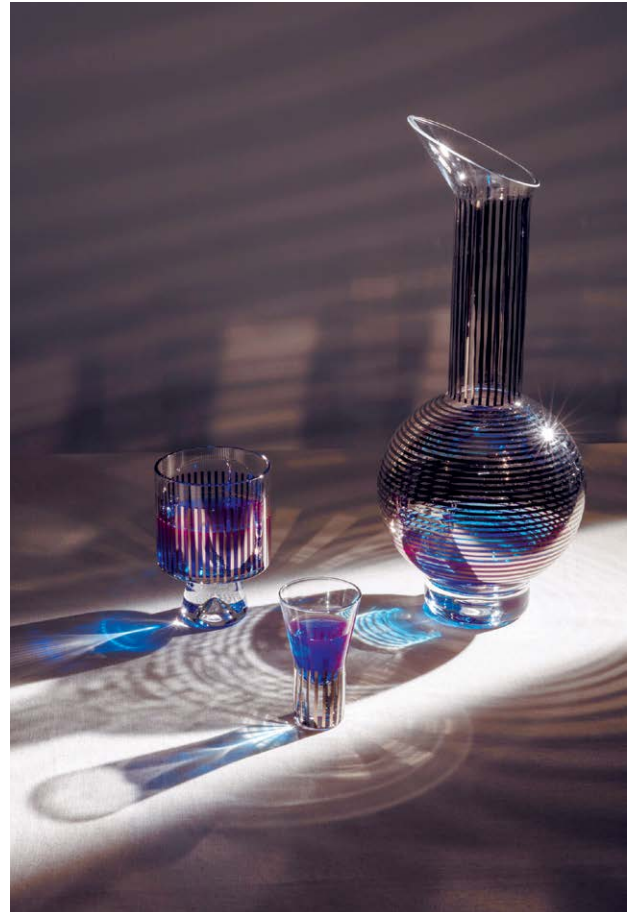


## JUNIOR MONARCH: DANDY GIRAFFE AND DESERT FOX RUGS

Junior Monarch was established in 2018, with the goal of introducing children to home decor with a heightened sense of aesthetics and design quality, as well as elevated production, sustainability and ethical values. Six designers from around the world were commissioned to respond to the brief, which was “rugs for children, but sophisticated enough for adults”. They were encouraged to be playful, sophisticated, colourful and refined.

The range attracted established designers such as Josh Brill of Portland, Maine – who has worked with the likes of Adidas and *Monocle* magazine – to create the bold and abstract Dandy Giraffe rug, while Barcelona-based street artist Ruben Sanchez came up with the remarkable Desert Fox pattern.

[juniormonarch.com](http://juniormonarch.com)



## TOM DIXON NEW COLLECTION: TANK PLATINUM STRIPE, ROCK LARGE CANDLEHOLDER AND TEA LIGHT, AND THE FORM STAINLESS-STEEL GIFT SET

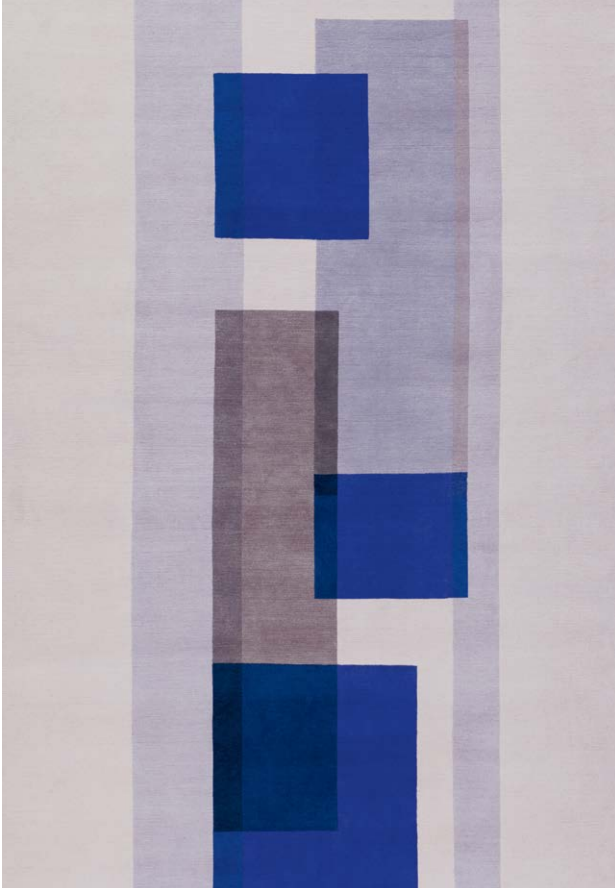
Veteran British designer Tom Dixon debuted several new collections at the festival, including Rock, a playful set of stackable and reconfigurable candleholders. He also introduced a stainless-steel tea set. Described as Bauhaus, space age or art deco, the crisp, clean reflective finish of Form sits comfortably in any setting. Characterised by luxurious hand-applied platinum decals, Tank takes its sculptural cue from the functional shapes and volumes of scientific glassware.

[tomdixon.net](http://tomdixon.net)

### THE RUG COMPANY: WITTON CARPET

Known for his use of print, pattern and colour, Jonathan Saunders has collaborated with the Rug Company for a second collection of handmade rugs with eight new designs. The Witton composition consists of planes of solid colours, which overlap to create new tones that play with perception.

*therugcompany.com*



### LUNDHS: ESSENCE COLLECTION

In collaboration with Jenkins & Uhnger, Essence is a series of tableware accessories that uses stone specialist Lundhs' Larvikite material. The collection comprises three boards, two vases, three trays and a pestle and mortar, with wood and brass detailing.

*lundhsrealstone.com*

### VINCENZO DE COTIIS: WALL CABINETS AND TABLE

Architect Vincenzo De Cotiis's *En Plein Air* exhibition at the Carpenters Workshop Gallery features 20 furniture-sculptures handmade by Italian artisans. The imaginative pieces combine semiprecious stones, Murano glass, recycled resin and cast brass.

*decotiis.it*

*carpentersworkshopgallery.com*



# LANDMARK PROJECTS

A series of installations throughout the capital have become the public face of the London Design Festival

## ES DEVLIN

*Please Feed the Lions* is a new interactive sculpture by award-winning artist and designer Es Devlin in Trafalgar Square. It joins the four monumental lions that have been sitting as silent British icons at the base of Nelson's Column for the past 150 years. Devlin's design is a fluorescent-red fifth lion that faces the National Gallery and roars poetry: what it roars will be up to members of the public to decide. Using a tablet, everyone is invited to 'feed the lion' with words, which it turns into poems.



## WAUGH THISTLETON

In the Sackler Courtyard at the Victoria & Albert Museum, Waugh Thistleton Architects and Arup have collaborated to create *MultiPly*, an interactive modular maze-like installation made using sustainable materials. The pavilion presents a possible solution to the problems of climate change and the shortage of affordable housing.

Alix Lawson co-founded London-based interior design house Lawson Robb when she was 23 years old, and has worked on projects for prominent families and developers in London, and across Europe and the Middle East. She founded her own interior lifestyle brand, Alix Lawson, in 2018. She was a judge at the A&D Trophy Awards in 2017. ■

